

Inspiring Great Spaces®

**Armstrong®**  
**FLOORING**



**FLOORING SOLUTIONS  
FOR HEALTHCARE**



# Procedure & Operating Rooms

Cleanability is key in operating rooms as well as pre-op exam and post-op recovery spaces, which require a sterile environment.

Armstrong offers a collection of homogeneous sheet floors developed specifically for these demanding healthcare spaces.

## Procedure & Operating Rooms need

- Aseptic, sterile environment
- Heat welded seams with flash coving
- Resistance to stains from chemical reagents and bodily fluids
- Resistance to rolling loads
- Long life
- Easy maintenance

HOM HET WAL



# Nurses Stations & Front Desk Areas

In addition to durability, Armstrong® floors offer colors and designs that can maximize comfort and ease stress for busy nursing staff and anxious patients in these high-traffic areas that serve as a hub of activity within hospitals, clinics and outpatient facilities of all kinds.

## Nurses Stations & Front Desk Areas need

- Resistance to heavy foot traffic and chair casters
- Comforting designs
- Long life
- Quick and easy maintenance

HOM HET LVT VCT WAL

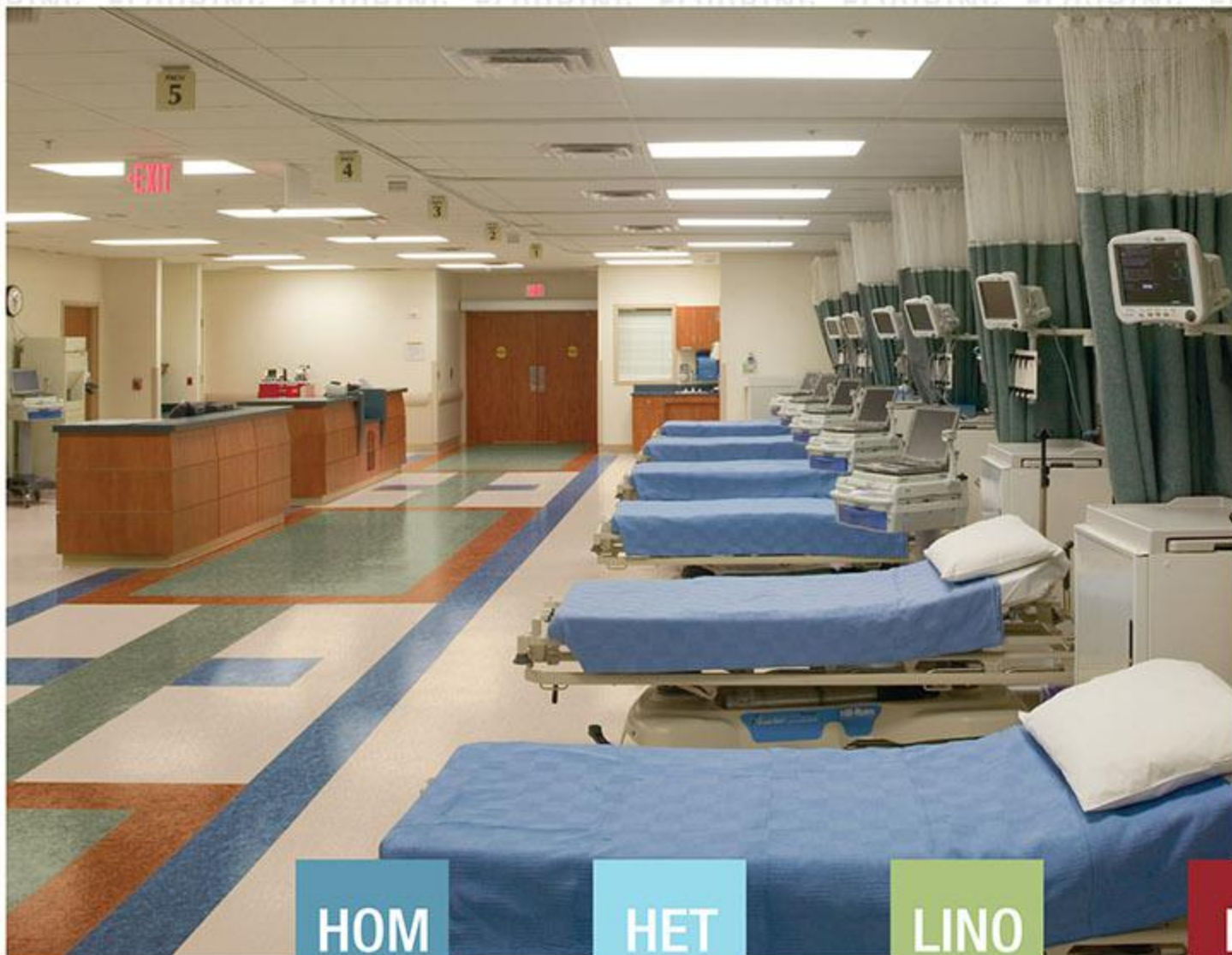
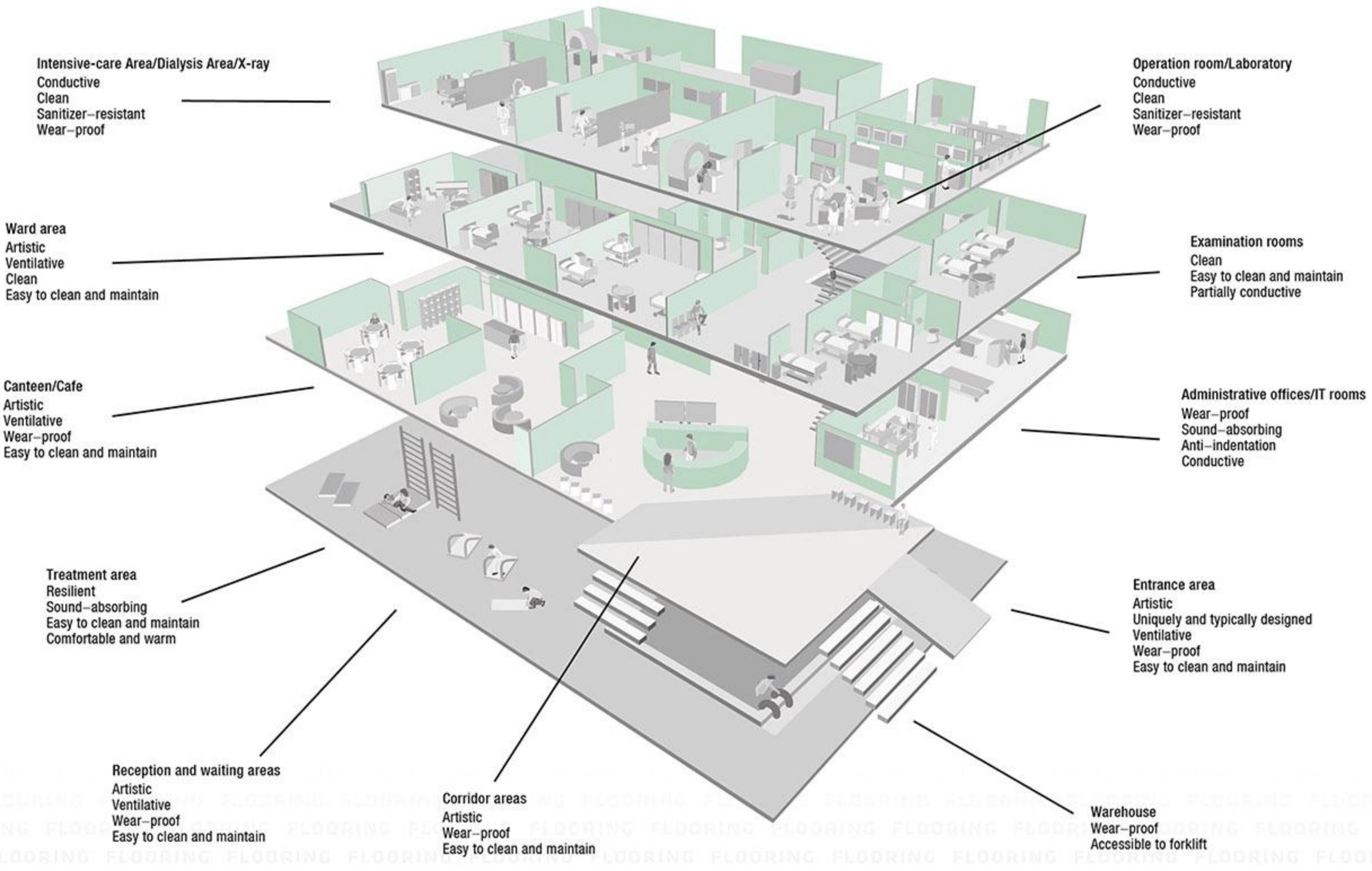


Xiasha Hospital, China





# Healthcare facilities present many requirements



**HOM**

HOMOGENEOUS SHEET

**HET**

HETEROGENEOUS SHEET

**LINO**

LINOLEUM

**LVT**

LUXURY VINYL TILE

**VCT**

VINYL COMPOSITION TILE





## WHAT MAKES YOUR FLOORING DIFFERENT



### Tough as Diamond

- Unique formulation with industrial diamond
- More compacted and tougher coating to protect the vinyl flooring



### Easy to Clean

- Water/oil-based pollutants are difficult to penetrate into flooring
- More economic and quicker cleaning maintenance



### More Durable

- Superb anti-scratching capability
- Double the average coating thickness of competitors
- Excellent user experience in durability



### Anti-Chemical

- Prevent kinds of medication and strong acid/alkali from damage to flooring
- Tolerate to daily repeated detergent treatment



**PT. BIRU & SONS**

**PT. BIRU & SONS DISTRIBUTOR ARMSTRONG SINCE 1998**

### JAKARTA

Jl. Pintu Besar Selatan No. 93,  
Jakarta Barat  
T: (021) 690 9893 / 690 6788  
E: contactus@biruindonesia.com

### SURABAYA

Jl. Raya Simojawar No. 35E  
T: (031) 9914 2878 / 914 7698  
E: sby@biruindonesia.com

### MEDAN

Jl. Sutomo. T: (061) 456 9907  
E: mdn@biruindonesia.com  
Jl. Asia. T: (061) 736 5785 / 736 5786  
E: asiamedan@biruindonesia.com