

**Armstrong®**  
FLOORING



400-606-0866  
[www.armstrongflooring.cn](http://www.armstrongflooring.cn)

**Armstrong®**  
FLOORING

**NATURAL CREATIONS**

**Valemount™**  
SPC Locking System



## WOOD GRAIN

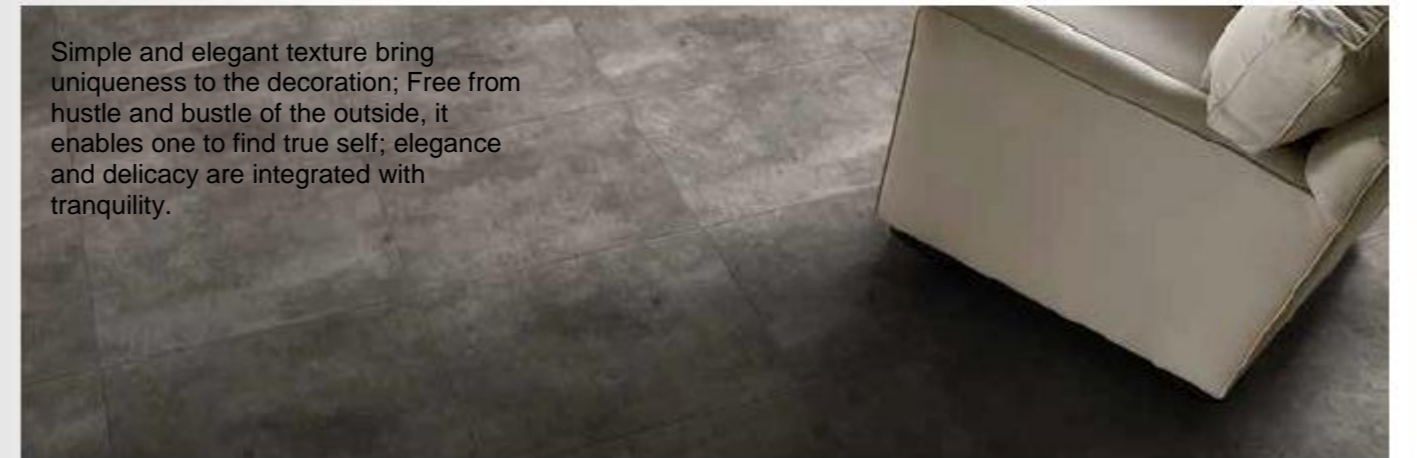
Valemount™

Nature-friendly harmony and fashion can live side by side due to elegant colors and clear textures, regardless of space design or home decoration.



## STONE PATTERN

Simple and elegant texture bring uniqueness to the decoration; Free from hustle and bustle of the outside, it enables one to find true self; elegance and delicacy are integrated with tranquility.



All patterns are available for 5G lock catch, with the No. -V5. Please come to local sales or customer service staff for details.



**Fruitwood Natural**

W0100 / W0100V5

9" x 48" / 228 x 1220mm x 5mm / 6.5mm



**Cottage Chestnut**

W0151 / W0151V5

9" x 48" / 228 x 1220mm x 5mm / 6.5mm





**French Washed Oak**

W0108 / W0108V5

9" x 48" / 228 x 1220mm x 5mm / 6.5mm



**High Land Oak**

W0152 / W0152V5

9" x 48" / 228 x 1220mm x 5mm / 6.5mm





**Drawbench Light**

W0103 / W0103V5

9" x 48" / 228 x 1220mm x 5mm / 6.5mm



**Acacia Implexa**

W0165 / W0165V5

9" x 48" / 228 x 1220mm x 5mm / 6.5mm







**Warm Hickory**

W0000 / W0000V5

9" x 48" / 228 x 1220mm x 5mm / 6.5mm



**Chestnut Bronze**

W0150 / W0150V5

9" x 48" / 228 x 1220mm x 5mm / 6.5mm





**Roan Oak Cocoa**

TP037 / TP037V5

9" x 48" / 228 x 1220mm x 5mm / 6.5mm



**Roan Oak Charcoal**

TP039 / TP039V5

9" x 48" / 228 x 1220mm x 5mm / 6.5mm





**Beige Gold**

SE204 / SE204V5  
12" x 24" / 305 x 610mm



Cool Sandstone

AB901 / AB901V5  
12" x 24" / 305 x 610mm





### Silk Scarf Platinum

SE215 / SE215V5  
12" x 24" / 305 x 610mm



Silk Scarf Black Silver

SE216 / SE216V5  
12" x 24" / 305 x 610mm





## SPC

Stone Plastic Composite is also known as RVP (rigid vinyl plank) in Europe and the United States. Extrusion molding is realized by professional equipment under high temperature after being heated and mixed by additives including PVC powder, mountain flour, elasticizer and stabilizer.



### SPC Selling Points

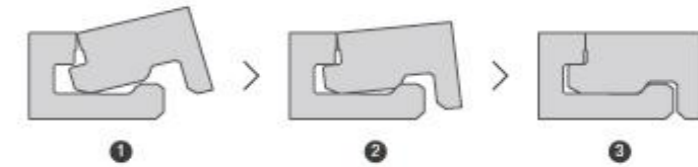
- Sound dimensional stability, no deformation or expansion, easy to use and maintain;
- Water-proof and moisture-proof;
- Protection against insects and termites, mildew resistant
- Environmental-friendly, without such harmful substances as benzene and formaldehyde, low TVOC;
- Free of heavy metals;
- Recyclable;
- With sound-absorbing bottom, excellent sound absorption performance;
- B1-level fireproof, self-extinguishing in case of fire, without producing any toxic gases;
- Simple installation and construction, optimizing installation cost and time;



### Välinge 2G Välinge 2G folding lock system

#### Properties and advantages

- Powerful fastening force
- Easy to install
- Strong locked force Longitudinally and horizontally
- The floor is not damaged during installation
- Minimize the risk of floor noise generated



### Välinge 5G—i Push DownSystem

#### Properties and advantages

- Easy to install
- One-piece lock catch with powerful fastening force
- Optimized lock catch design of 5G-i locking system reduces the risk of causing damage to the floor during installation
- Compatible with materials with different thickness to a certain degree



Product name	Standard	Properties
<b>Natural Creations - Shengdanshi SPC Locking System</b>	GB/T 34440	
Appearance		Wood grain, stone pattern
Product dimensions		305mm*610mm (Non-wood grain); 228mm*1220mm (Wood grain)
Overall thickness		5.0mm ; 6.5mm ((5.0mm hard bottom +1.5mm sound absorbing pad))
Wear layer thickness		0.30mm, 0.5mm
Lock type		Valinge 2G or 5Gi locking system
<b>Safety performance</b>		
Pollution and chemical reagent resistance	ISO 26987	Qualified
Limit of harmful substances	GB/T 34440	Qualified
Peel strength	GB/T 34440	Average value $\geq 75\text{N}/50\text{mm}$ , single value $\geq 70\text{N}/50\text{mm}$
Flame retardance	GB 8624	Bf1-s1
Slip resistance level	DIN51130	$\geq \text{R9}$
<b>Performance data</b>		
Length deviation	GB/T 34440	$\leq 228.6\text{mm}$ , $\pm 0.2\text{mm}$ ; $228.6 < \text{ln} \leq 304.8\text{mm}$ , $\pm 0.3\text{mm}$ ; $> 304.8\text{mm}$ , $\pm 0.5\text{mm}$
Width deviation	GB/T 34440	
Overall thickness deviation	ISO 24346	$+0.13/-0.10\text{mm}$ , limit $\pm 0.15\text{mm}$
Wear layer thickness deviation	ISO 24340	"Average value: $+13\%$ , $-10\%$ , maximum value not exceeding $+0.10\text{mm}$ , $-0.10\text{mm}$ ; Single value: $\leq 0.05\text{mm}$ or $15\%$ below the average value"
Squareness	ISO 24342	$> 400\text{mm}$ , $\leq \pm 0.35\text{mm}$ ; $< 400\text{mm}$ , $\leq \pm 0.25\text{mm}$
Residual indentation	GB/T 34440	$\leq 0.40\text{mm}$
Dimensional stability after heating	ISO 23999	$\leq 0.25\%$
Color fastness	GB/T 34440	$\geq 6$
Warping due to coldness and heat	GB/T 34440	$\leq 2\text{mm}$
Wear resistance:	GB/T 34440	T
Castor wear	EN 649	Pass
6.5mm sound absorption index	ISO 717-2	$\geq 18\text{dB}$