



ArmstrongFlooring™

Athleta®

TECHNICAL DATA

CHARACTERISTICS	STANDARD	UNIT	RESULT
Type of flooring			Sports floor
Surface treatment			PUR
Pattern			Pure color,wood
SAFETY CRITERIA			
Flammability	EN 13501-1	class	Bfl-s1
Limit of harmful substances	GB 18586-2001		pass
TVOC after 28 day	ISO 16000	µg/m ³	≤ 20
PERFORMANCE BEHAVIOUR			
Roll dimentions	EN ISO 24341	m	2.0m*12/15/20m
Overall thickness	EN ISO 24346	mm	4.5
EN 14904 - European Standard for Indoor Sports Floors			
Impact sound reduction	ISO 717-2	dB	≥15
Dynamic coefficient of friction	EN 13036-4		80-110
Impact resistance	EN 1517		≥ 8 N/m & ≤ 0.5 mm
Vertical rate of change	EN 14809	mm	≤ 3.5
Vertical ball rebound	EN 12235	%	≥ 90
Gloss (85°)	EN ISO 2813		≤ 30
Rolling load	EN 1569	mm	≤ 0.5
Wear resistance	EN ISO 5470-1	mg	≤ 300
Residual indentation	EN 1516	mm(24h)	≤ 0.5
Domestic technical indicators for sports floors			
Sliding-resistance value	GB/T 14833		0.45-0.60
Hardness (shore A)	GB/T 14833	Degree	60-92
Rebound value	GB/T 19851.11	%	≥ 5
Tensile strength	GB/T 14833	Mpa	≥ 0.7
Tensile strength	GB/T 14833	%	≥ 90
Fire resistance	GB/T 14833	Grade	I
Vertical ball rebound	GB/T 19995.2	%	≥ 85



Samples are used for color selection only.
Please take actual bulk samples as the sealed samples.



K2001-08

Hippo Grey



K2001-07

Cloud Beige



K2001-02

Elle Grey



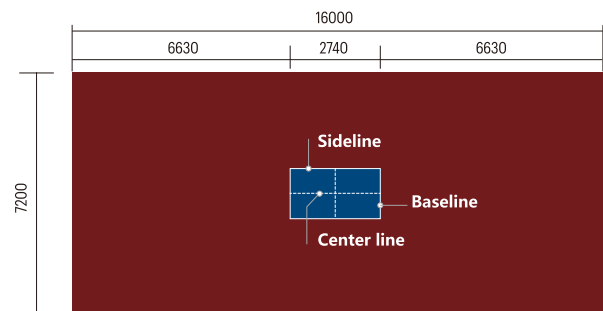
K2001-04

Red



TABLE TENNIS

- Table tennis is featured with quick and sudden moves, which may cause muscle strains and lead to joint injuries. The good elasticity of our floors can protect your knees, and the moderate friction force allows flexible movements.
- The color of floors is soft and has undergone special light treatment to deliver better protection for your eyes while preventing visual fatigue.
- Special surface texture design meets characteristics of table tennis competitions – small-area and multi-directional, featuring frequent skidding.
- The multi-layer stable structure and the high-density buffer layer minimize the floor deformation caused by loaded instruments.



*Standard table tennis table size: 2740mm(L) x 1520mm(W)

Unit: mm



 **BADMINTON**

- The high-buffer shock absorber reduces the impact force upon jumping and landing, providing protection for athletes.
- The piggy-grain design improves the grip of your shoe sole, allowing more robust movements for athletes.
- Easy to clean and maintain.



K2001-11 Sky Blue



K2001-03 Light Blue



K2001-05 Grass Green



K2001-12 Dark Blue



K2001-01 Bold Orange



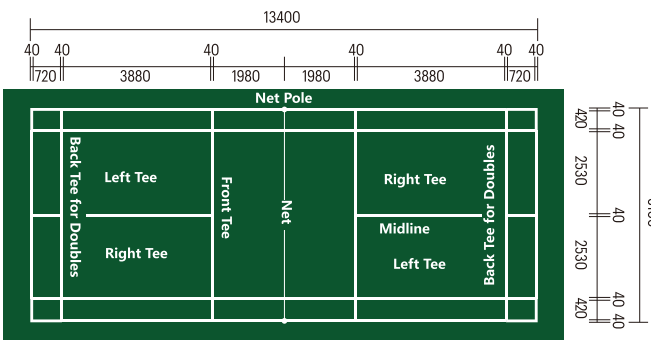
K2001-06 Yellow



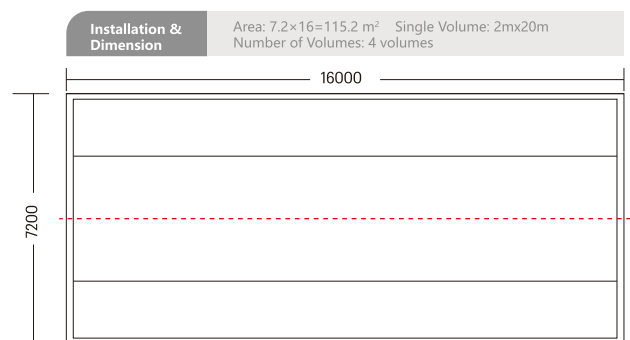
K2001-10 Jade Green



K2001-09 Orange Pink



Unit: mm



* Before installation, draw the long axis first.

Unit: mm



K2003-01

Light Maple



K2003-03

Blue Maple



K2003-02

Origin Maple



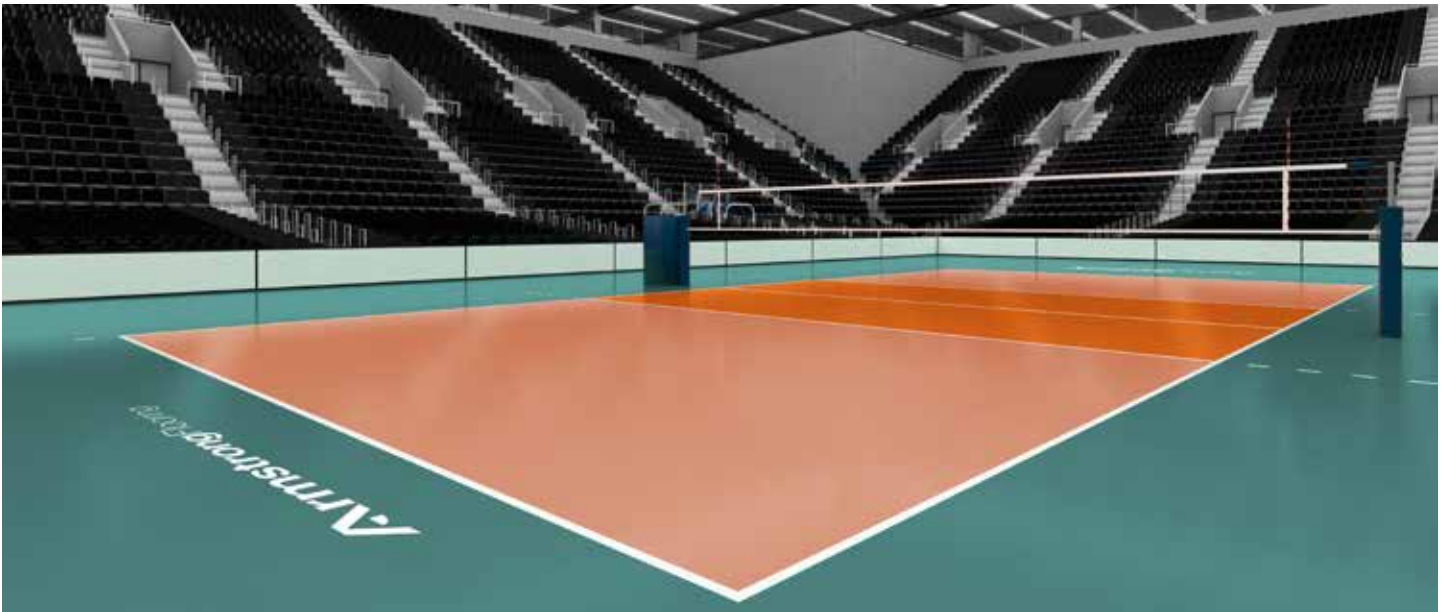
K2002-01

Classic Oak



K2002-02

Grey Oak



 VOLLEYBALL

- The high-buffer shock absorber reduces the impact force upon jumping and landing, providing protection for athletes.
- The piggy-grain design improves the grip of your shoe sole, allowing more robust movements for athletes.
- Easy to clean and maintain.



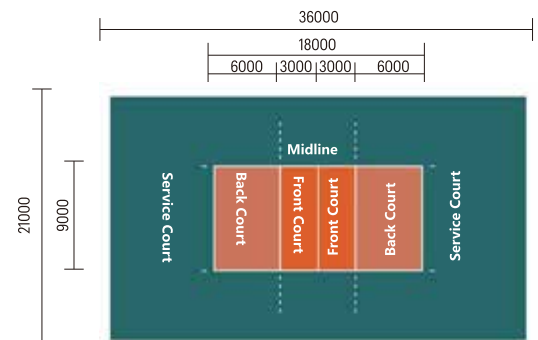
K2001-10



K2001-09



K2001-01



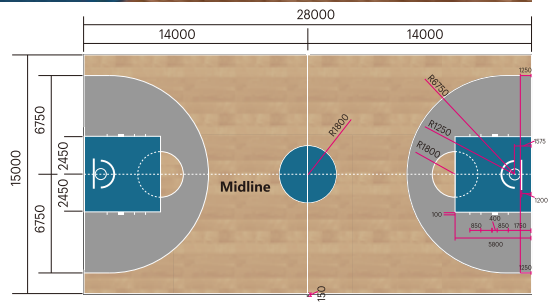
Unit: mm



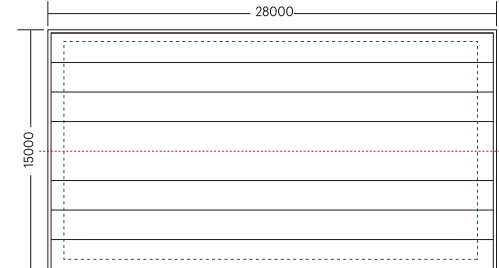
BASKETBALL

- Water-based ink printing process, clear wood grain, realistic effect.
- Colorful wood grain design, easy to match the color of the venue, making the site more integrated and pretty.
- Ball rebound performance is moderate, no deviation in the direction of the rebound.
- Outstanding slip resistance, ensure safety and flexibility during high-speed moves and breakthroughs as well as post moves in the paint.
- Micro-foaming backing layer technology provides cushioning upon falling or inactive landing during competitions, minimizing sports injuries.

Recommended Color



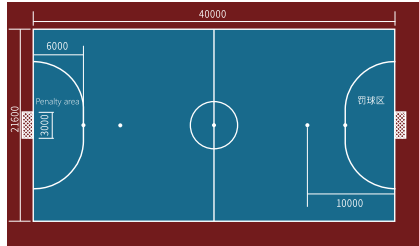
Notes: Drawing lines on the basketball court are all 50 mm in width. Unit: mm
Installation & Dimension Area: 15x28=420m² Single Volume: 2m x 20m Number of Volumes: To be confirmed according to the practical scheme.



* Before installation, draw the long axis first. Unit: mm

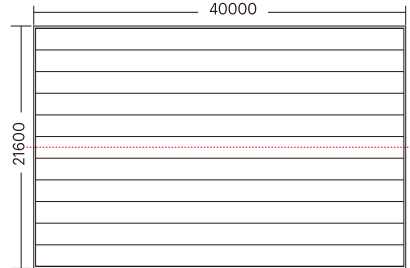
INDOOR FOOTBALL

- The friction coefficient is between the flat and the grass, and the movement is excellent.
- Significantly reduce the probability of injury caused by athletes rushing to the ground.
- Provide good support for sudden stops, starts and turns across the stadium.
- Excellent wear resistance, sufficient for the frequent use of indoor football games.



Unit: mm

Installation & Dimension Area: 21.6x40=864m² Single Volume: 2m x 20m Number of Volumes: To be confirmed according to the practical scheme.



* Before installation, draw the long axis first. Unit: mm

ATHLETA[®]

Sports Flooring

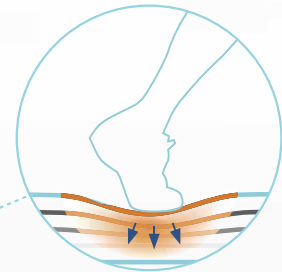
Professional sports flooring provides safer and easier sports experiences while enhancing your athletic performance. With excellent wear resistance, multiple color choices and special surface treatment, it is easy to maintain, and shows high resistance to burning, scratching, detention and slips, adding fun to your exercise.

Meet EN14904 – the European Standard for Indoor Sports Floors



Protection Functions

Sports floors can minimize impact forces and reduce the risk of injury. This is crucial, especially for people whose body weight is relatively low (e.g. children). The properties of the surface also reduce the pressure on your joints.



System Variations



High abrasion resistance

The high-quality pure PVC wear layer protects the floor from damage and scratches



Residual indentation resistance

Effectively reduce indentations and residual indentations; alleviate the problem of pulling apart and tearing when dragging stadium facilities on the floor



Vertical rate of change

Provides excellent grip for the foot, reducing the risk of injury during movement



Ball rebound

Even surface enables stable ball rebound performance in all areas



Friction coefficient

Perfect balance of friction and grip to enhance your athletic performance



ArmstrongFlooring™
Walk On. Walk Strong.™

Athleta®
HET

PT. BIRU & SONS

Jl. Pintu Besar Selatan No. 93, Jakarta Barat 11110 – Indonesia

T : (021) 690 9893/ 690 6788

F : (021) 690 9892

E : flooring@biruindonesia.com/ contactus@biruindonesia.com