

Inspiring Great Spaces™



DIAMOND 10™ Coated Heterogeneous Vinyl Sheet

COLORWIN®



DIAMOND 10™ Coated Heterogeneous Vinyl Sheet

COLORWIN®

Sophisticated Design Meets Long-Life Performance

Inspired by the pattern of water ripple, Armstrong Colorwin performs beautifully with Diamond 10™ in demanding spaces while offering a wide selection of on-trend colors and unique patterns.

The coordination of light beige and neutral grey colors make a warm and harmonize atmosphere. It's perfect for office, healthcare and retail application.

DIAMOND 10™ TECHNOLOGY



Tough as Diamond

- Unique formulation with industrial diamond
- More compacted and tougher coating to protect the vinyl flooring



Easy to Clean

- Water/oil-based pollutants are difficult to penetrate into flooring
- More economic and quicker cleaning maintenance



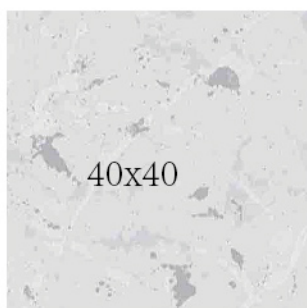
More Durable

- Superb anti-scratching capability
- Double the average coating thickness of competitors
- Excellent user experience in durability

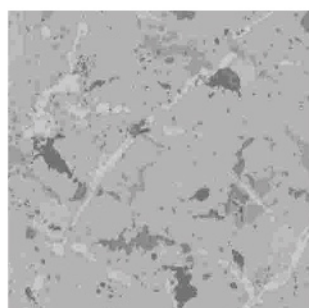


Anti-Chemical

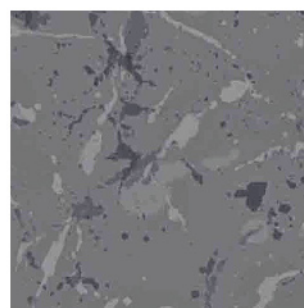
- Prevent kinds of medicament and strong acid/alkali from damage to flooring
- Tolerate to daily repeated detergent treatment



K6152-01A Dawn Gray
W6152-01



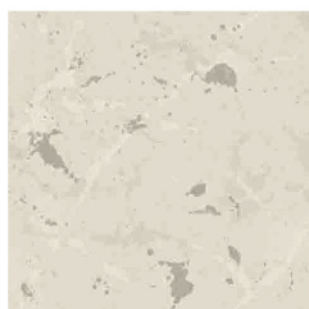
K6152-06A Wild Gray
W6152-06



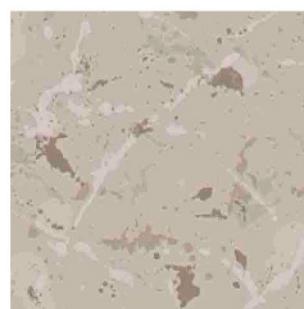
K6152-17A Dark Gray
W6152-17



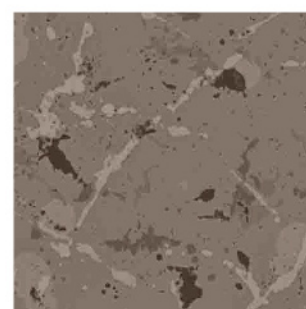
K6152-04A Frigid Gray
W811-210



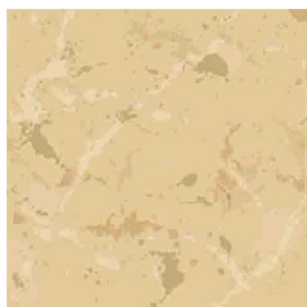
K6152-05A Soyabean
W6152-05



K6152-10A Kona
W6152-10



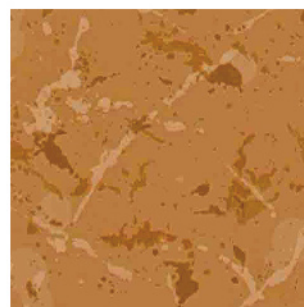
K6152-11A Silicon
W6152-11



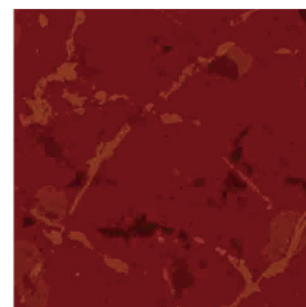
K6152-09A Kidney Bean
W811-316



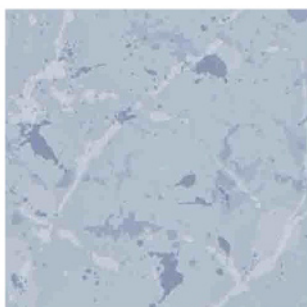
K6152-14A Barley Yellow
W6121-05



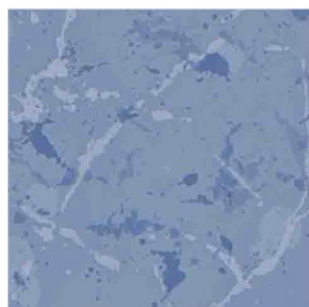
K6152-15A Kumquat
W6051-15



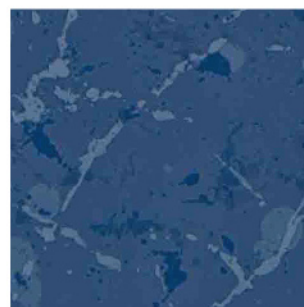
K6152-16A Blaze Red
W6051-16



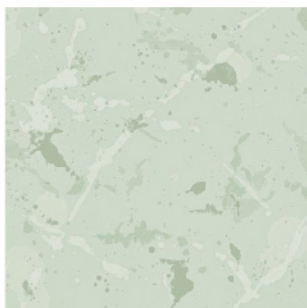
K6152-02A Purple Cabbage
W6152-02



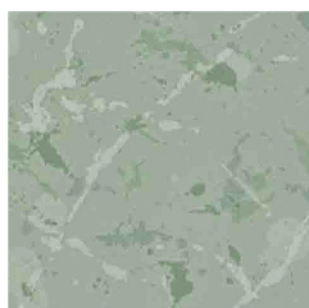
K6152-07A Myosotis
W6152-07



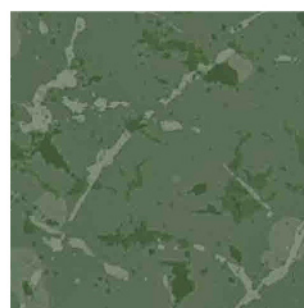
K6152-12A Kaffir Blue
W6152-12



K6152-03A Crystal Green
W851-511



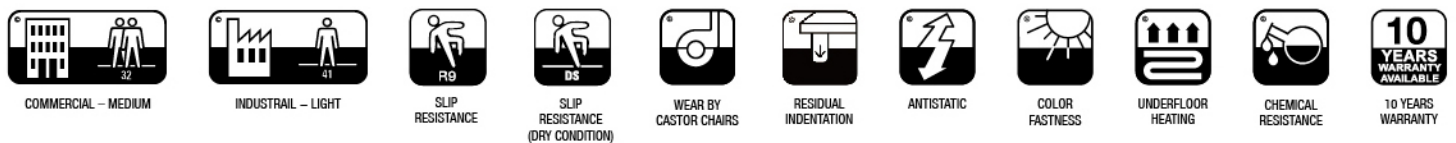
K6152-08A Pond Green
W6152-08



K6152-13A Fores Green
W6152-13

Technical Data

Characteristics	Standard	Unit	Result
Type of flooring	ISO 10582 / EN 649		Solid Heterogeneous Vinyl Sheet
Coating			DIAMOND 10™
Pattern			Aquaria
Safety criteria			
Flammability	EN13501-1	class	B _{f1} -s1
Slip resistance	EN 51130	group	R9
Dynamic coefficient of friction	EN 13893	class	DS
TVOC(after 28 days)	AgBB / DIBt	µg / m ³	< 50
Performance behaviour			
Roll dimensions	ISO 24341 / EN 426	m	2.0x15/20
Overall thickness	ISO 24346 / EN 428	mm	2.0
Thickness of wear layer	ISO 24340 / EN 429	mm	0.4
Residual indentation	ISO 24343-1 / EN 433	mm	< 0.1
Dimensional stability	ISO 23999 / EN 434	%	< 0.4
Wear resistance	EN 649	group	T
Color fastness	ISO 105-B02	rating	≥ 6
Castor wheel test	EN 425		No damage
Chemical resistance	EN 423		No Stain 0



Sample piece in this sample folder is only for color reference, the structure and color of which may be varied in actual product supplying

PT. BIRU & SONS

Jl. Pintu Besar Selatan No. 93, Jakarta Barat 11110 – Indonesia

T : (021) 690 9893/ 690 6788

F : (021) 690 9892

E : flooring@biruindonesia.com/ contactus@biruindonesia.com

www.biruindonesia.com

