

Inspiring Great Spaces™
创想·天地™



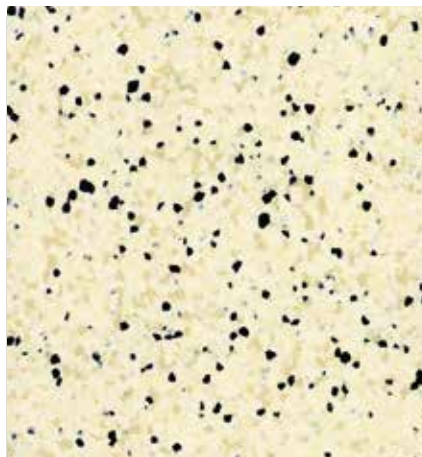
CONDUCTIVE & ESD VINYL TILE 防静电地板片材

PASTELL®

静护龙®

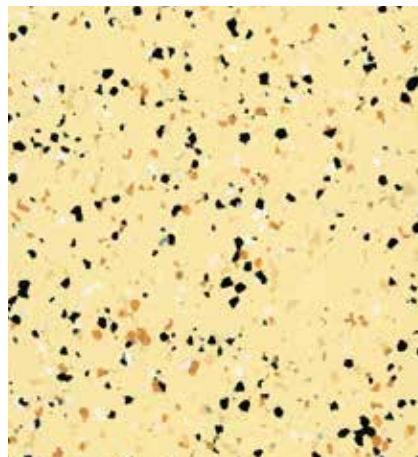


ESD 1101/CONDUCTIVE 2101



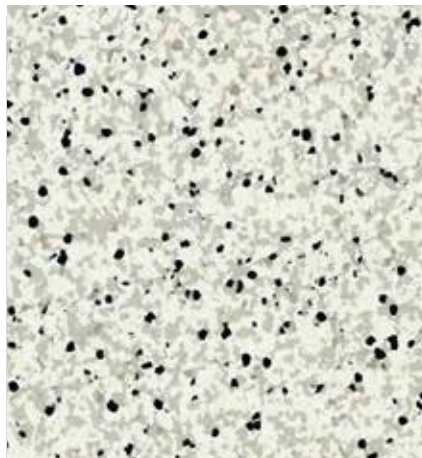
1101-304
2101-304

Winkie 玉子白



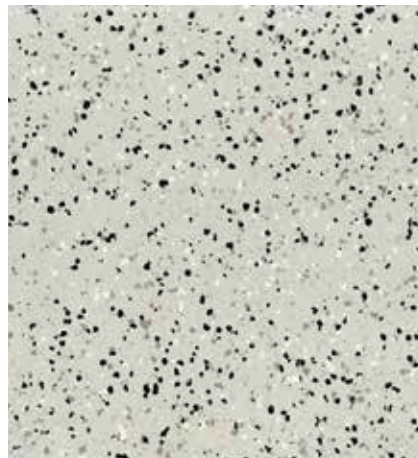
1101-310
2101-310

Light Yellow 米黄



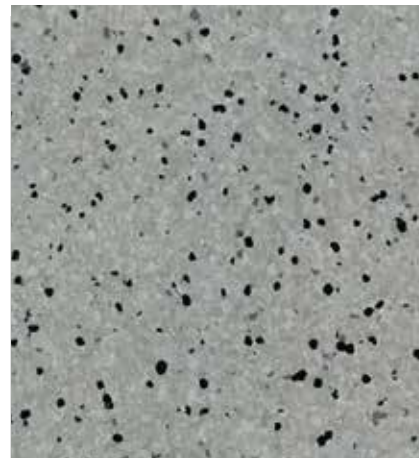
1101-091
2101-091

Ceilometer 云米



1101-001
2101-001

Light Grey 浅灰



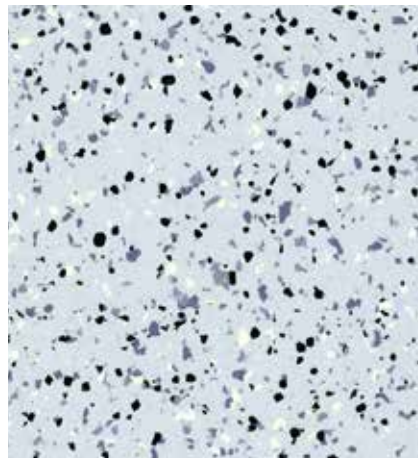
1101-008
2101-008

Forest Grey 林灰



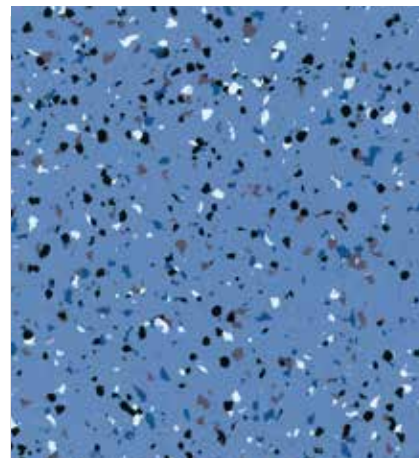
1101-512
2101-512

Soft Green 柔绿



1101-614
2101-614

Porcelain 青瓷蓝



1101-620
2101-620

Sapphire 蔚蓝

ESD 1013/CONDUCTIVE 2013



1013-801 Porcelain 瓷白
2013-801



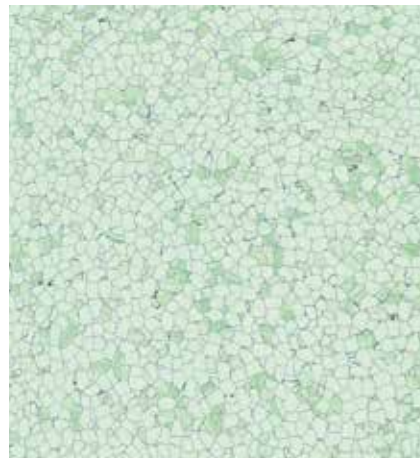
1013-003 Grey Pumice 浮石灰
2013-003



1013-601 Blue Porcelain 青花瓷
2013-601



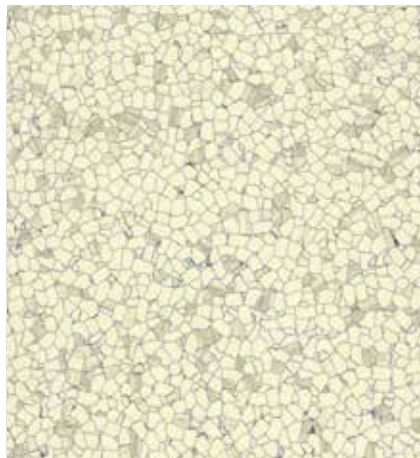
1013-001 Grey Porcelain 汝灰瓷
2013-001



1013-501 Crystal Green 冰晶绿
2013-501



1013-203 Yellow Crystal 黄晶玉
2013-203







1013-201 Cloudy 云霓
2013-201



1013-502 Agate Jasper 玉玛瑙
2013-502

Technical Data 产品数据

Structure 结构	Standard 标准	Unit 单位	Pastell Conductive 静护龙导电地板	Pastell ESD 静护龙静电耗散地板
Type of flooring 材料类型	EN 649 / EN ISO 10581		Conductive vinyl tile 导电电片材	ESD vinyl tile 静电耗散片材
Overall thickness 总厚度	EN 428 / EN ISO 24346	mm	2	2
Tile width / length 片材尺寸	EN 426 / EN ISO 24341	mm	2101 : 1000 x 1000 2013 : 600 x 600	1101 : 1000 x 1000 1013 : 600 x 600
Total weight 重量	EN 430 / EN ISO 23997	g/m ²	2101 : 3150 g/m ² 2013 : 4100 g/m ²	1101 : 3150 g/m ² 1013 : 4100 g/m ²
Safety criteria 安全要求				
Flammability 防火	EN 13501-1	class 等级	Bfl - s1	Bfl - s1
Slip resistance 防滑	DIN 51130	group 组	R9	R9
REACH Regulation No. 1907/2006 有害物质限量	REACH 181		contains no substances mentioned in the SVHC-list 不含清单中涉及物质	contains no substances mentioned in the SVHC-list 不含清单中涉及物质
Performance 性能				
Impact sound reduction 吸音	EN ISO 10140	dB	3	3
Residual indentation 残余凹陷	EN 433 / EN ISO 24343	mm	0.05	0.05
Wear resistance 耐磨度	EN 649	group 组	P	P
Color fastness 色牢度	ISO 105-B02	rating 度数	≥6	≥6
Electrical resistance 抗电阻性	EN 1081	Ω	1.0x10 ⁴ - 1.0x10 ⁶	1.0x10 ⁶ - 1.0x10 ⁹
Static electrical propensity 静电测试性能	EN 1815	kV	≤2.0	≤2.0
Thermal resistance 热阻值	EN 12667	m ² K/W	0.04	0.04
Resistance to staining 化学抗污	EN 423 / EN ISO 26987		good resistance 无污染	good resistance 无污染
Castor chair 脚轮测试	EN 425	Type W	Suitable 适用	Suitable 适用
Classification 分类				
Domestic 家用	IOS 10874-EN 685	class 等级	23 heavy duty	23 heavy duty 重承载
Commercial 商用	IOS 10874-EN 685	class 等级	34 very heavy duty	34 very heavy duty 极重承载
Industrial 工业	IOS 10874-EN 685	class 等级	43 heavy duty	43 heavy duty 重承载
Additional property 附加特性				
Castor chair 脚轮滚动  ✓			Antistatic behaviour 静电负荷  ✓	
Underfloor heating 基层遇热  ✓			Chemical resistance 抗酸碱能力  ✓	

PT. BIRU & SONS

Jl. Pintu Besar Selatan No. 93, Jakarta Barat 11110 – Indonesia

T : (021) 690 9893/ 690 6788

F : (021) 690 9892

E : flooring@biruindonesia.com / contactus@biruindonesia.com